



SOCET GXP®

Advanced geospatial exploitation and customized product creation combined into one comprehensive solution

Delivering the most advanced exploitation of geospatial data, SOCET GXP® ingests imagery from satellite and aerial sources enabling users to identify, analyze, and extract ground features while supporting rapid product creation. Image analysis, advanced photogrammetric techniques, remote sensing, and feature collection workflows are seamlessly combined into a single, effective solution.

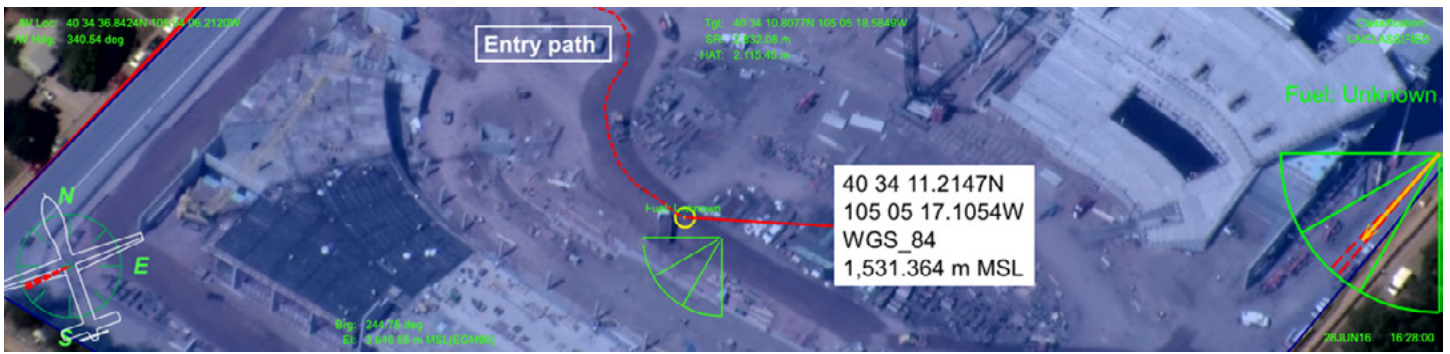
- » Image and video analysis and exploitation
- » Customized reporting and product creation
- » Intuitive and streamlined user interface
- » Rigorous sensor modeling and accuracy
- » Streaming enabled client
- » Integration with enterprise systems
- » Comprehensive Application Programming Interface (API)

SOCET GXP integrates seamlessly with other GXP® products including GXP Explorer®. Combining these solutions into a production environment, users can discover and stream data (including full metadata) directly to a Multiport for more rigorous analysis. Users can then publish final products back to the GXP Explorer catalog, allowing for subsequent discovery by the entire federated user base.

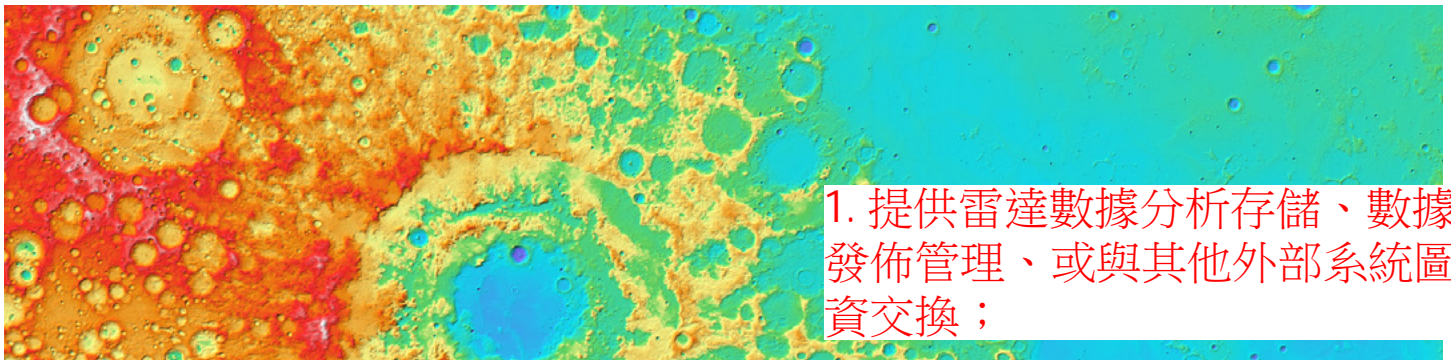
With SOCET GXP, analysts can leverage a wide variety of exploitation capabilities including:

- » Automatic feature extraction
- » Image orthorectification
- » Multi-sensor triangulation
- » Automated terrain extraction
- » Terrain analysis and editing
- » Annotation and feature creation including direct connections to geodatabases
- » 3-D modeling
- » Multispectral and hyperspectral analysis
- » Synthetic Aperture Radar (SAR) processing
- » LiDAR visualization and exploitation
- » Precise mensuration
- » Precision targeting
- » Tracking analytics
- » Video exploitation

GXP® Geospatial solutions
to ensure **a safer world.**



Analysis of video surveillance on a construction site; imagery courtesy of L-3 Communications, EO/IR Inc.



1. 提供雷達數據分析存儲、數據發佈管理、或與其他外部系統圖資交換；

Simple connection to Open Geospatial Consortium (OGC®) reference imagery, such as lunar topography; imagery courtesy of United States Geological Survey (USGS).



2. 提供雷達數據須符合OGC國際標WMS、WFS、WCS、WPS圖資服務規範；

Automatic identification of aircraft at a major airport; imagery courtesy of Video Inform.

SOCET GXP is utilized by image, geospatial, and all-source analysts at organizations across the world:

- » Defense forces, intelligence agencies, and homeland security
- » Photogrammetry, mapping, and surveying agencies
- » Systems integrators
- » State, local, and regional governments
- » Transportation departments
- » Natural resource management consultants
- » Universities and research organizations

SOCET GXP workflows reduce production times for the development of geospatial intelligence, eliminate the redundancy of multiple software packages, and maximize interoperability with other geospatial technologies including SketchUp, KML / KMZ, GeoPDF®, ArcGIS®, COLLADA™, and OpenFlight.

Americas
Tel 800 316 9643
gxpsales@baesystems.com

Asia
Tel +603 2191 3000
gxpsales.asia@baesystems.com

Australia and New Zealand
Tel +61 2 6160 4000
gxpsales.apac@baesystems.com

Europe, Middle East, and Africa
Tel +44 1223 370 022
gxpsales.emea@baesystems.com